



# Year 6

## Holy Cross

Mr Green

Miss Vickers

# This session will be about:

- ▶ SATs dates
- ▶ Maths
- ▶ English
- ▶ Homework
- ▶ Attendance
- ▶ Reading
- ▶ Any questions



# SATs



**Monday 11<sup>th</sup> May 2026**

Grammar, Punctuation and Spelling –  
Paper 1  
Grammar, Punctuation and Spelling –  
Paper 2

**Tuesday 12<sup>th</sup> May 2026**

English Reading

**Wednesday 13<sup>th</sup> May 2026**

Maths Paper 1 (Arithmetic)  
Maths Paper 2 (Reasoning)

**Thursday 14<sup>th</sup> May 2026**

Maths Paper 3 (Reasoning)

On the morning of the SATs tests, children to arrive at 8am for breakfast (provided free of charge).

# Maths SATs



# Maths

## ► Tests:

- Arithmetic – 40 marks (30 minutes)
- Reasoning 1 – 35 marks (40 minutes)
- Reasoning 2 – 35 marks (40 minutes)

\*extra time of an extra 25% is sometimes available where children qualify for it.

# Numeracy – what you need to do

Know your  
times tables.

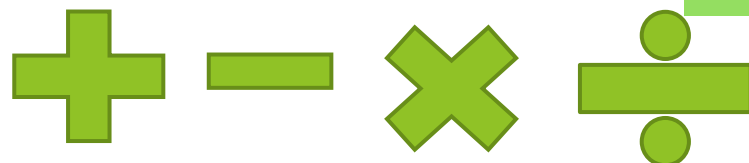
Do your  
homework.

Practise mental  
methods.

Practise  
written  
methods.

Practise  
fractions and  
percentages.

$$\begin{array}{r}
 15 \overline{) 4320} \\
 \underline{30} \phantom{0} \\
 132 \phantom{0} \\
 \underline{120} \phantom{0} \\
 120 \phantom{0} \\
 \underline{120} \\
 0
 \end{array}$$



## Paper 1 - Arithmetic



25

$$37.8 - 14.671 =$$

1 mark

26

$$\frac{1}{4} + \frac{1}{5} + \frac{1}{10} =$$

1 mark

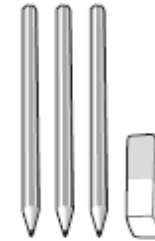
## Papers 2 and 3 - Reasoning

9

6 pencils cost ~~£1.68~~



3 pencils and 1 rubber cost ~~£1.09~~



What is the cost of **1 rubber**?

Show  
your  
method

2 marks

# Reading and Spelling, Punctuation and Grammar SATs







# English

- ▶ Reading – 50 marks (60 minutes)
- ▶ Spelling – 20 marks (15-20 minutes)
- ▶ Grammar and Punctuation – 50 marks (45 minutes)
- ▶ Writing is assessed through pieces produced by the child throughout the year.

# Advice for completing your SATs reading paper:



- read the text quickly, look at everything on the page (dates, labels under photos etc.);
- read the questions very carefully;
- for 3 mark questions, P.E.E. (Point, Evidence, Explain);
- your answers; maximum time you should spend on each text is 20 minutes.

# Key stage 2



## **English grammar, punctuation and spelling test mark schemes**

Paper 1: questions  
and Paper 2: spelling

1

Draw a line to match each word to the correct **suffix** to make an **adjective**.

**Word**

manage

harm

self

**Suffix**

ish

able

ful

1 mark



**2016 national curriculum tests**

# **Key stage 2**

**English grammar,  
punctuation and spelling**

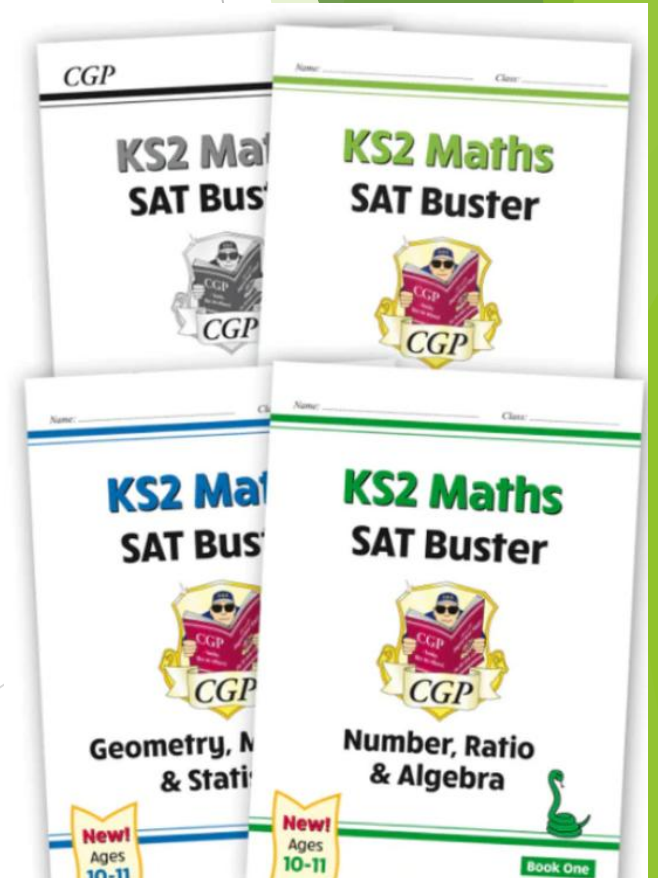
**Paper 2: spelling**

## Spelling task

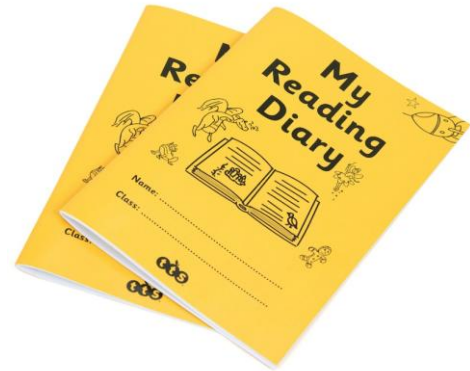
1. Jordan's messy room was in a state of \_\_\_\_\_.
2. David gave a \_\_\_\_\_ on the door before entering.
3. Anita was \_\_\_\_\_ her shoes.

# Documents for support in SATs preparation:

- ▶ Spelling rules;
- ▶ Written mathematical methods sheet;
- ▶ QR codes to buy practise books from Amazon;
- ▶ <https://www.holycross.swindon.sch.uk/>
- ▶ Speak with teachers - our doors are always open!



# Homework



Week 16 – Words with endings /shuhl/ after a consonant letter

Look/Say	Write / Check	Write / Check	Write / Check	Write / Check	Write / Check
influential					
martial					
spatial					
partial					
confidential					
essential					
substantial					
potential					
sequential					
torrential					



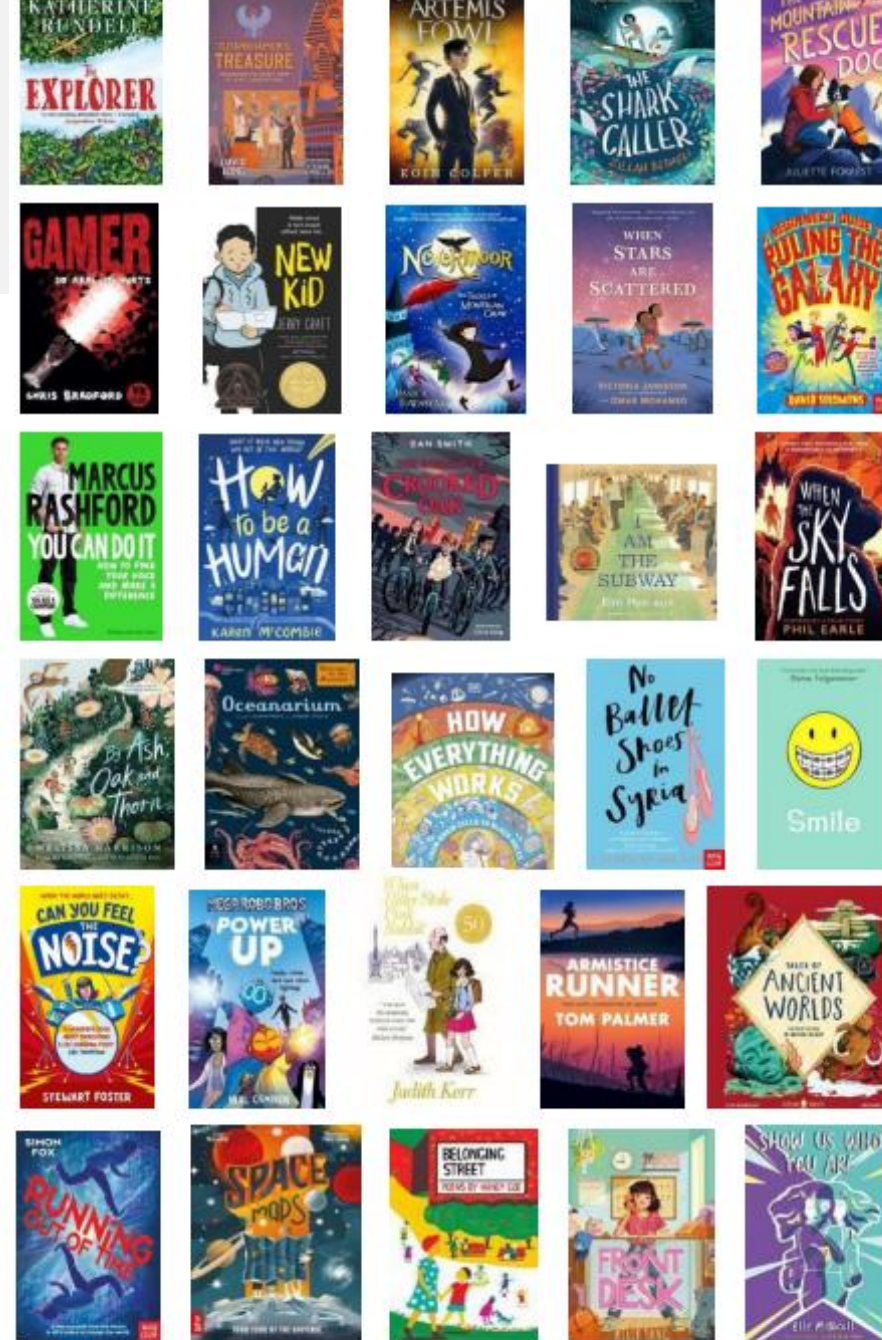
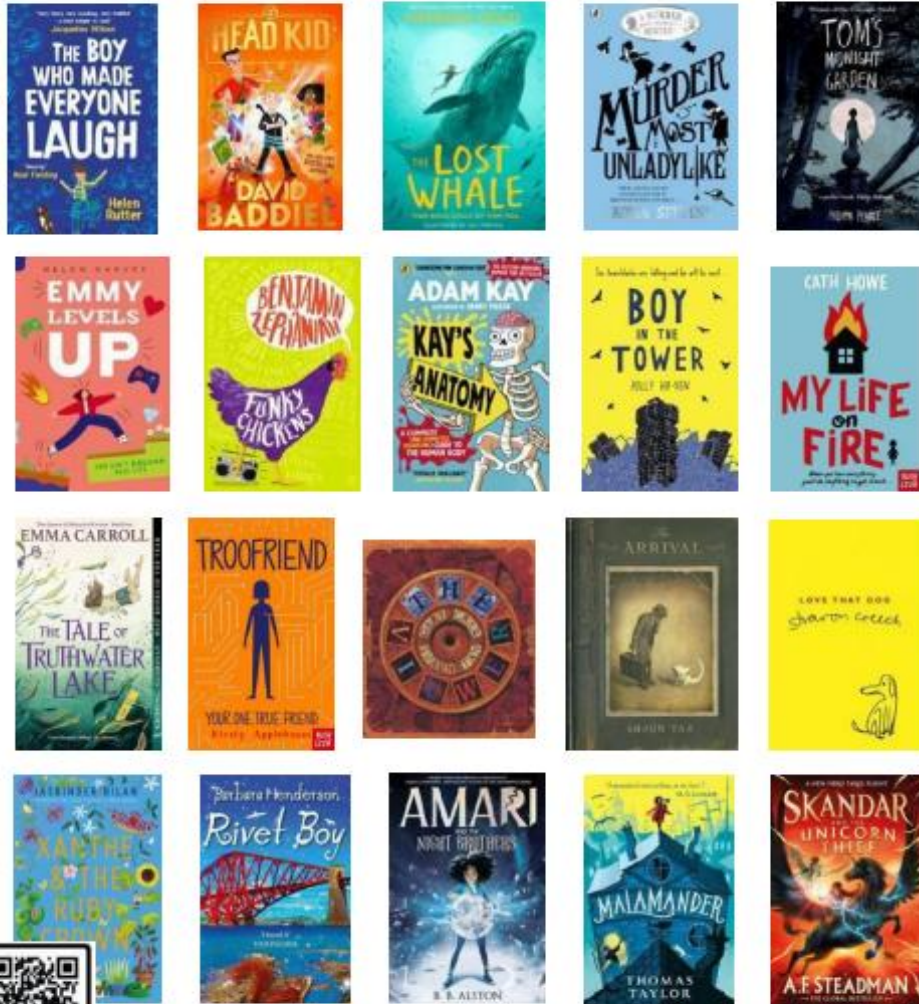
# Attendance



# Reading in Year 6



- ▶ A reading book is selected or recommended by a teacher which is to be taken home and brought back everyday with the reading record.



SCAN ME

[www.booksfortopics.com/year-6](http://www.booksfortopics.com/year-6)

For more primary school booklists, visit [booksfortopics.com](http://booksfortopics.com)

2018 Paper	Date to bring back to school
Reading paper	Monday 23 <sup>rd</sup> February
Grammar paper Arithmetic paper 1	Thursday 26 <sup>th</sup> February
Reasoning paper 2	Monday 2 <sup>nd</sup> March
Reasoning paper 3	Thursday 5 <sup>th</sup> March

Any questions?